



Instruction for Use

Smartphone Eye Imaging Adaptor

Model: VPA-200



Please be sure to read this manual carefully before using the instrument and keep it handy for ready reference

Thanks for purchasing QuikVue Smartphone Eye Imaging Adaptor (hereafter named “QuikVue”) designed by VisuScience Meditech Co., Ltd.

QuikVue provides a high-resolution lens 10x and harmless LED light source to illuminate the anterior segment of eye. It can be attached on most models of smartphones easily and capture anterior-segment of eye images or videos by switching among different LED lights. QuikVue is used in photo-documentation for cornea pathological imaging. QuikVue does not have diagnosis and measuring function.

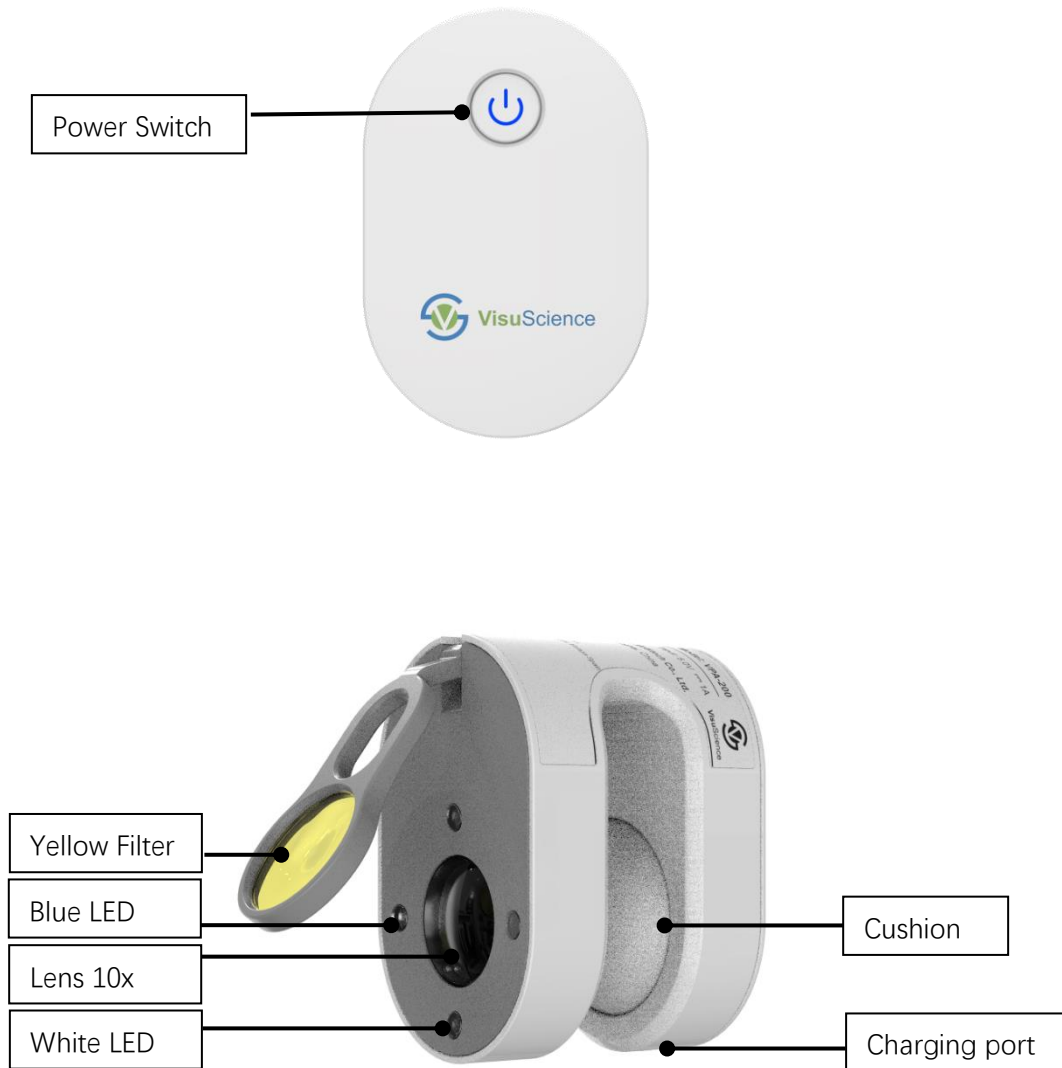
Precautions

1. Please do not store and use this equipment in flammable, explosive, high temperature, humid and dusty environments. Please keep the device clean and dry.
2. Please do not disassemble or perform operations not mentioned in this manual. Improper handling may damage the equipment or cause personal injury.
3. Please do not touch the lens surface with your hands or hard objects;
4. This device is provided for observation of the patient's eyes only, not for diagnosis.
5. This device has a light source. When turned on, the LED light source will generate a small amount of heat, which is normal. Turn off the device when not in use.
6. Do not replace the battery by yourself, otherwise it may bring unforeseen consequences;
7. If the instrument is abnormal, cut off the power immediately;
8. Before cleaning the instrument, please shut down;
9. This instrument uses DC low voltage, and no electromagnetic interference with other medical equipment has been observed. If there is some kind of interference in the use environment, it can be verified by turning the instrument on or off. If it is really related to the instrument, the interference can be eliminated or improved by adjusting the distance and orientation of the devices.

Specifications

Magnification	10x
Illumination	White (2 level of brightness), Cobalt blue
Filter	Flipable Yellow Filter (option)
Working distance	15-20mm
Image capture	Still image, video
Power	3.7V 320mAh Rechargeable li-ion battery
Working time	5 hours
Charging time	1.5 hours
Recharging	Type-C USB cable DC 5V 1A
Charging Power	AC 110~220V ±10%, 50/60Hz
Environment Temperature	+5 °C ~ +40 °C
Relative Humidity	≤90%
Air Pressure	860hPa ~ 1060hPa
Weight	59g

QuikVue Structure



Installation Guide

QuikVue is suitable for most models of smartphones.

Please clip the QuikVue onto the smartphone with the innovative air cushion. The air cushion can fix QuikVue tightly on the smartphone. Please make sure the micro lens on QuikVue is in alignment with smartphone's camera. User can check the preview image on smartphone's screen to confirm the position.



Lights Switching Guide

Please press the power switch to turn on different LED lights.

First press, the white LED will be on.

Second press, the white LED will become brighter.

Third press, the white LED will be off and the blue LED will be on.

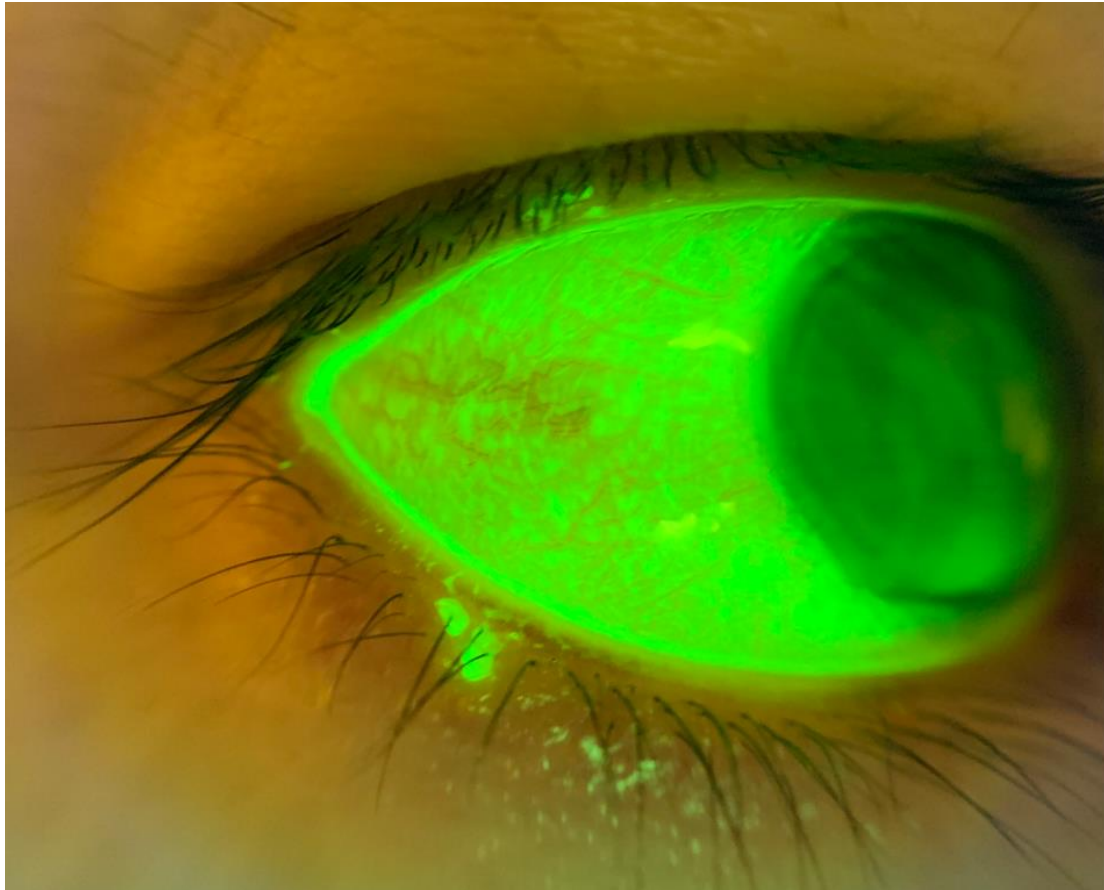
Fourth press, all LED lights will be off.

Usage Guide

1. Attach the QuikVue onto the smartphone and align the QuikVue with the camera of the smartphone
2. Switch on the white LED light.
3. Open the camera of smartphone
4. Keep the QuikVue around 2cm far away from the patient's eye to preview the clear image
5. Take the photo or video for the pathology of anterior segment of eye.

Fluorescein examination

QuikVue could do the fluorescein examination when switch the light to the cobalt blue light by pressing the power button for 3 times, and fold down the yellow filter.



Battery Charging Guide

When the LED light becomes dim, please use Type-C USB cable to recharge QuikVue adaptor. The charging indicator will be blue during recharging status. When the power charging is finished, the indicator will be green. The full charging time takes about 60 minutes. The working time for QuikVue after fully recharged is 6 hours.

Cleaning Guide

Please clean the surface of QuikVue with wet soft cloth and avoid touching lens, LED bulb and power switch. If necessary, please clean the lens, LED bulb and power switch with dry superfine micro fiber cloth.

If you meet any problem during operation of QuikVue, please do not disassemble the product by yourself. Please contact the provider who provided you with the QuikVue adaptor, or contact VisuScience Meditech Co., Ltd. for help.



Subject to change in design or specifications without advance notice

Version: 1.1

Issue date: 20240401



VisuScience Meditech Co., Ltd.

Add: Room 501,503 Ruiyun 5 No. 99 Furongzhongsan Rd., Wuxi, China

Tel. : +86 510-85757880 | Email: info@visuscience.com

Website: www.visuscience.com



SUNGO Europe B.V.

Fascinatio Boulevard 522, Unit 1.7, 2909VA Capelle aan den IJssel,
The Netherlands

© 2019-2024 VisuScience. All rights reserved.

